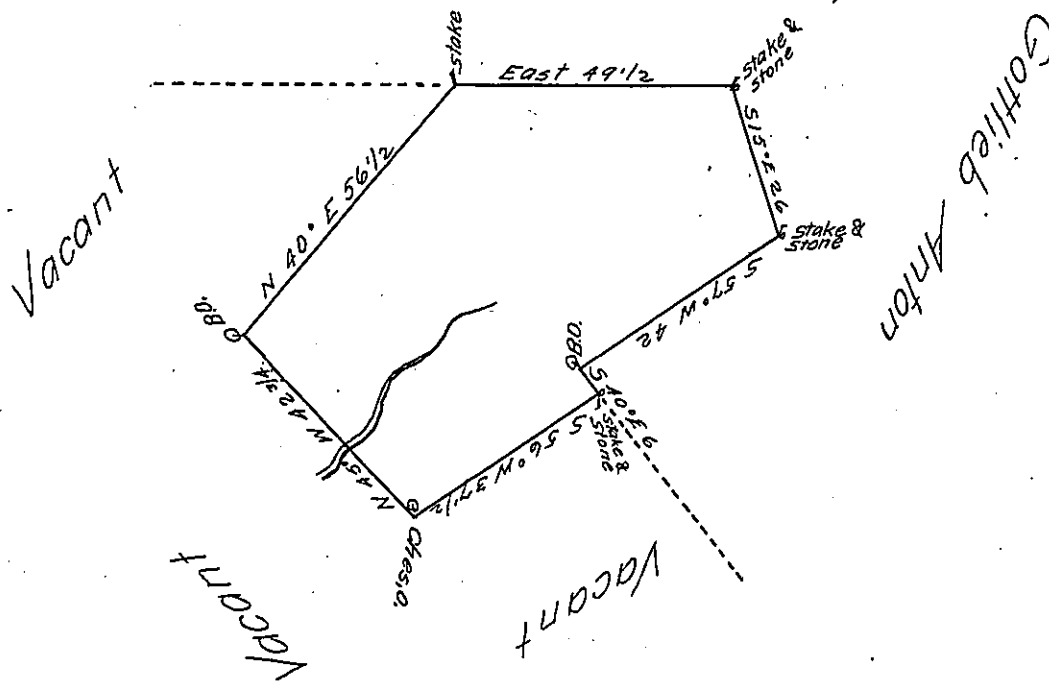


Gottlieb Anton



By Virtue of a Warrant dated the 2nd May 1788. Surveyed the 30th June 1789
 to Michael Kaester the above described Tract of Land Situate in Lower Mount Bethel Township Northampton County Containing Twenty three Acres and One Quarter and the Allowance of Six Per Cent &c.

P Geo. Palmer

To John Lukens Esq^r }
 Surveyor General }

* Say June

IN TESTIMONY that the above is a copy of the original remaining on file in the Department of Internal Affairs of Pennsylvania, made conformably to an Act of Assembly approved the 16th day of February, 1833, I have hereunto set my Hand and caused the Seal of said Department to be affixed at Harrisburg, this fourteenth day of August 1905

Geo. B. Palmer
 Secretary of Internal Affairs.